



ECOPLAN

ECOLOGICAL / ENVIRONMENTAL LAND PLANNING
LANDSCAPE ARCHITECTURE • LAND USE ANALYSIS



INTRODUCTION

EcoPlan is an international Land Planning and Landscape Architectural firm specializing in the design of resort, residential, and commercial developments. Principals Joel Jones and John Harrigan, utilize over 45 years of combined environmental planning and construction experience to create unique and inventive design solutions.

From program definition and computer analysis, to conceptual sketches and construction documents, EcoPlan produces the graphic drawings and technical documents needed to transform ideas into reality.





DESIGN APPROACH

EcoPlan's attention to detail can be seen throughout its many mixed-use, resort and residential projects. The Cloister, Balesin Island and Four Seasons Papagayo embody the many principles of design necessary for creating a unique resort destination.

EcoPlan's experience in coastal and tropical climates is evident in their global portfolio. Many of their past projects have been located in remote locations, which means that they have knowledge and experience dealing with various site conditions and selecting the proper hardscape materials, plant palette and lighting fixtures.

As you review our portfolio you will see that in each project we strive to design unique and authentic environments. In each case, not only do the details reflect the local materials, culture, owner's vision and site conditions, but the planning also reflects the vision, physical and cultural conditions. Even in the similar geographic regions, we realize that there may be subtle differences in site conditions, native materials and culture that will influence everything from early planning decisions all the way to material selections and the design of the smallest site detail.



GLOBAL EXPERIENCE

EcoPlan's portfolio of work spans over 30 countries, including destinations throughout the US, Caribbean, Latin America, Europe, Mediterranean Region, Middle East, Africa, and Asia. Since 1996, they have been designing everything from luxury hotels in the isolated peninsulas of Costa Rica, to upscale resort communities in coastal Georgia.

EcoPlan has had the pleasure of collaborating with some of the world's most respected consultants, operators, brands, and developers. Having been involved on most projects with a multi-disciplinary team, they understand the importance of working with experts from various fields to bring about the best possible solution for both the client and the environment. A few of the people they have worked with include:

Hotel Operators:

The Breakers
Fairmont Hotels and Resorts
Four Seasons Hotels and Resorts
Hilton
Iberostar
Intercontinental
Marriott
Renaissance
Rosewood
Ritz-Carlton
St. Regis
Westin

Golf Course Architects:

Tom Doak/Renaissance Golf Design
Pete and Perry Dye
P.B. Dye
Ernie Els Design
Faldo Design
Tom Fazio Golf Course Design
Golfplan
Hurdzen & Fry
JMP Golf Design
Nicklaus Design
Greg Norman Golf Course Design
Arnold Palmer Design Company
Schmidt-Curley Design
Tom Watson Design

Architects and Interior Designers:

Adache Group Architects
Architectural Design Group
Baker Design Group
BBGM
Bensley
DiLeonardo
HKS, Inc.
International Design Concepts
KPF Architects
Kuo Diedrich Architecture
Lake-Flato Architects
Lynn Wilson Associates International
OBMI
Peacock & Lewis
Peter Capone
RDH & Associates
RKI, Ltd.
RTKL
SB Architects
VOA Associates, Inc.
WATG
Zurcher Arquitectos

Coastal Engineers:

Applied Technology & Management
Coastal Systems International
Cummins Cederberg
Moffatt & Nichol

HOTEL AND RESORT EXPERIENCE

EcoPlan has had the pleasure of collaborating with some of the world's most respected hotel brands and operators. Our diverse experience helps us better understand the needs of the various operators and more importantly the guest. A few of the hotel operators they have worked with include:

**JW MARRIOTT****FOUR SEASONS**
Hotels and Resorts**SEA ISLAND
PROPERTIES****CONRAD**
HOTELS & RESORTS™**Hilton****ROSEWOOD**
HOTELS & RESORTS**RENAISSANCE**
HOTELS & RESORTS**INTERCONTINENTAL**
HOTELS & RESORTS**WESTIN**
HOTELS & RESORTS**IBEROSTAR**
HOTELS & RESORTS**ST REGIS****THE BREAKERS**
PALM BEACH **Marriott****SuperClubs**

COLLECTION OF HOTELS & RESORTS

**THANOS**
hotels and resorts**D-HOTELS
& RESORTS****EMBASSY
SUITES**
by HILTON™**THE RITZ-CARLTON***Fairmont*
HOTELS & RESORTS**AUTOGRAPH
COLLECTION®**
HOTELS

PARTNER BIOGRAPHIES

Joel Jones, PLA
Principal

Since joining EcoPlan in 1996 Jones has been involved in a variety of projects with a focus on upscale resort, residential and coastal destinations. Over this time, he has worked in over two dozen countries around the world including Brasil, China, Costa Rica, Cyprus, Dominican Republic, Grenada, Ireland, Morocco, the Philippines, St. Lucia, Saudi Arabia, Taiwan, and Zimbabwe.

Promoted to Principal in 2004, Jones has helped lead the firm in planning, design and expanding its presence in new frontiers. Jones has been responsible for the firm's growth in China and Southeast Asia since 2008. In the last 12 years working in Asia he has led the firm in over forty resort related projects in the region. He has spent extensive time traveling throughout the world, studying local cultures and immersing himself in these unique places.

Jones has also been involved in many branded hotel projects from initial planning through construction, including Four Seasons, Hilton, Intercontinental, Marriott, Rosewood and Westin.

Jones received his Bachelor of Science in Landscape Architecture with Distinction from Pennsylvania State University and his Masters of Landscape Architecture from the University of Illinois. He is a registered Landscape Architect (PLA) and a CLARB Board Certified Landscape Architect.

Jones has led the firm in the following projects:

- *Anassa Resort and Spa – Polis, Cyprus*
- *Anya Tagaytay Residential and Resort – Tagaytay, Philippines*
- *Balesin Island Resort – Quezon, Philippines*
- *Changshou Hu – Chongqing, China*
- *D-Hotel Maris – Maris, Turkey*
- *The Harbor Club Hotel – Rodney Bay, St. Lucia*
- *Iberostar Resort and Residential – Marrakech, Morocco*
- *Jalousie Enclave – Soufriere, St. Lucia*
- *Luttrellstown Castle – Dublin, Ireland*
- *Mulan Bay – Hainan Island, China*
- *Rosewood Hotel at Harrison Point – Barbados, West Indies*
- *Simapo Island – Hainan, China*
- *Tomson Residential Community – Shanghai, China*
- *Westin Resort at Rōco Ki – Punta Cana, Dominican Republic*



PARTNER BIOGRAPHIES

John Harrigan, PLA
Principal

Harrigan joined EcoPlan in 1996 where he has been involved in a variety of projects ranging from upscale resorts and communities to commercial developments, locally and worldwide. During his time at EcoPlan, Harrigan has worked in over a dozen countries with a focus on Latin America and the United States. Within Latin America, Harrigan's efforts have been focused on Costa Rica where he has led over 25 projects. Within the United States, Harrigan has worked on projects in West Virginia, the Carolinas, Georgia, and throughout the State of Florida.

Promoted to Principal in 2004, Harrigan has helped lead the firm in planning, design and administrative tasks. As co-manager of the firm, Harrigan's management tasks include marketing, human resources, studio/staff management and accounts management. Planning and Landscape Architectural Design related tasks undertaken by Harrigan have included principal-in-charge, project management and lead design for several well known international and local projects.

Harrigan received his Bachelor of Landscape Architecture with Honors from the University of Florida. While working towards his degree, Harrigan also completed two summer internships with an international planning and Landscape Architectural firm in Fort Lauderdale, Florida. He is a registered Landscape Architect.

Projects in which Harrigan has directed include:

- *Aberdeen Golf and Country Club – Boca Raton, United States*
- *Adventures on the Gorge – West Virginia, United States*
- *Annabelle Resort – Paphos, Cyprus*
- *Caribe Hilton – San Juan, Puerto Rico*
- *Four Seasons Resort at Peninsula Papagayo – Guanacaste, Costa Rica*
- *Curitiba Trade Center – Curitiba, Brasil*
- *Isla del Rey Resort – Las Perlas, Panama*
- *The James Hotel – Miami, United States*
- *Los Cielos Wellness Resort - Matapalo, Costa Rica*
- *Los Sueños Marriott – Jaco, Costa Rica*
- *Lynn Financial Center – Boca Raton, Florida*
- *Merendon Hills – San Pedro Sula, Honduras*
- *Praia do Forte – Salvador, Brasil*
- *Rio Office Park – Barra da Tijuca, Brasil*



BIOGRAPHIES

Hayley Pedersen, PLA, LEED AP
Senior Associate

Since joining the firm in 2002, Pedersen has been involved in many different facets of projects, from analysis of conservation land to designing downtown streetscapes. As a LEED Accredited Professional in Building Design and Construction, her expertise includes creative problem solving, ecological land planning and application of environmental design, project managing, writing, and graphic design using computer graphic applications.

Pedersen joined EcoPlan after receiving her Bachelor of Landscape Architecture degree from the University of Florida, graduating with highest honors. She is a registered Landscape Architect.

Projects in which Pedersen has directed or worked on extensively include:

- *Los Cielos Wellness Resort and Residences – Matapalo, Costa Rica*
- *Le Paradis Golf and Beach Resort – St. Lucia, West Indies*
- *Simapo Island – Hainan Island, People's Republic of China*
- *Anya Tagaytay – Tagaytay, Philippines*
- *El Mar Resorts – Lauderdale-By-The-Sea, FL*
- *The Cloister Hotel – Sea Island, Georgia*
- *Frederica Township – Sea Island, Georgia*
- *Sanya Cheung Kong Resort – Sanya, People's Republic of China*
- *Divilacan Resort – Isabella, Philippines*
- *The Jalousie Enclave – Soufriere, St. Lucia*
- *Aberdeen Golf and Country Club – Boynton Beach, Florida*
- *Discovery Center at Rōco Ki – Punta Cana, Dominican Republic*



BIOGRAPHIES

Halle Yaeger
Associate

Yaeger joined EcoPlan in early 2014 and has been involved in various projects ranging from master planning to small scale site design. She brings with her an attention to fine detail, computer rendering, and experience with many phases of the construction process, from the initial concept to the installation of plant materials and hardscape. During her time at EcoPlan, Yaeger's efforts have been split between local projects in the Fort Lauderdale area and international projects including sites in the Philippines, Aruba, Turkey and Colombia.

Before joining EcoPlan, Yaeger worked with Colao & Peter, an award-winning custom stone and masonry company out of Washington, D.C., specializing in residential and small commercial projects. Yaeger developed designs, construction documents and was highly involved in the bidding process, gathering takeoffs and estimating all work material costs. Prior to her work with Colao & Peter, Yaeger earned her Bachelors of Science in Landscape Architecture degree from The Ohio State University where she was a member of the Architecture Scholars Program.

Key projects in which Ms. Yaeger has been involved include:

- *Plantation Pointe Corporate Campus – Plantation, FL*
- *Bubali Caribe Plaza Marriott Residence Inn – Bubali, Aruba*
- *Divilican Estate – Isabella, Philippines*
- *Alegria Resort – St. Maarten, Netherlands Antilles*
- *Aqua Condominium – Grand Cayman*
- *Wynwood Park – Wynwood District of Miami, FL*



BIOGRAPHIES

Ravija Munshi
Designer

Munshi joined EcoPlan in summer 2019 and has been involved in projects ranging from master planning to small scale site design. As an entry-level professional, her skills include, developing illustrative graphics, images and visual presentations; assisting various project teams with site analysis, schematic design, design development, and production of construction documents; generating both hand-drawn and digital renderings; attention to detail and organization.

Before joining EcoPlan, Munshi worked with City of Arlington(TX)- Urban Design Center, where she worked closely with City planning staff on business and neighborhood development projects to provide urban design solutions, landscape development plans, streetscape design, and redevelopment plans, and present before and after images, to the general public. Prior to her work with City of Arlington, Munshi earned her internship at TBG Partners to get the collaborative experience with multi-disciplinary staff to solve complex design challenges integrating landscape and architecture within a design and planning context. Prepare rendering & visual communication graphics for presentation. Munshi received her Master's degree in Landscape Architecture from The University of Texas at Arlington, graduating with various scholarships and awards.

Key projects in which Ms. Munshi has been involved include:

- *The Farm – Grand Cayman*
- *Lacovia – Grand Cayman*
- *Aqua Condominium – Grand Cayman*
- *Sinclair Community College – Dayton, Ohio*



SERVICES

EcoPlan provides their clients with a wide array of design services, spread out over two distinct phases. Master Planning occurs during the initial phase of the project and involves the overall “big idea.” After the Master Plan is complete, the ideas become more refined and set during the Detailed Design phase.

This tried and tested process guides the ownership and design team for the duration of a project. Each step is important and provides a threshold for making both design and economic decisions that direct the future phases.

DESIGN PROCESS

MASTER PLANNING

1. Program Definition

The owner/client assembles the design team, which usually includes the land planner, architect, engineer, economist and others as necessary (golf, marine, etc.) The Client's vision for the project is laid out and a preliminary feasibility study is done by an economist. The team will have discussions on the direction of the project based on experience.

2. Site Inventory

Prior to engaging in the analysis process, the consultant team will require any available base information for the property that is available. This information may include topographic and boundary surveys, aerial photography and zoning maps. Additional information such as climate data, soils, wetlands delineation, vegetation inventory and geotechnical information may also be required depending on site conditions.

3. Site Analysis

Design team visits the site to become familiar with the existing conditions. Following that, each discipline provides analysis for their respective areas of expertise. Typically, economists will analyze the market and provide a refined market study, the land planner will analyze the physical (site) opportunities and constraints, the engineer will look into the projects's infrastructure requirements and the architect will analyze the regional character and history.

4. Conceptual Design

The land planner begins conceptual diagrams illustrating various land use alternatives. The development scenarios are reviewed by the team and modified until a single, preferred concept emerges. Examples of items reviewed are the potential density yield(s), alternative road and golf routing, and open space 'requirements.'

5. Preliminary Master Plan

Plan is enlarged to show more detail, but is still flexible. 'Final' densities and project components are established; potential development costs are weighed against yield(s). Adjustments are made by each discipline before final Master Plan and the balance of economic realities and physical capacities of site are weighed.

6. Master Plan

The Master Plan package combines the final plans and sketches with the economic data to form a graphic presentation with supporting text. It is a full color illustrative presentation of brochure quality.

- Coordinated package combining all disciplines
- Lender's package
- Agency Submittals
- Marketing brochures
- Phasing strategy

Depending on the project location, government agency involvement varies widely, some starting as early as the Conceptual Design Phase, while others may require completion of the full Master Plan.

DESIGN PROCESS

DETAILED DESIGN

1. Conceptual and Schematic Design

Following the Master Plan and the definition of the first phase(s) of development, EcoPlan begins designing site components in more detail. Phase one development areas are enlarged as more detail begins to emerge.

- Site plans and layouts are developed
- Site sections are drawn showing vertical relationships
- Site quantities are estimated

2. Design Development

Upon completion of the Schematic Design, the next set of drawings begin to illustrate all site components to be constructed. Exterior areas are further enlarged in plan and initial construction details are developed. Typically, site elements include the following:

- Pavement types, patterns and materials are selected
- Grading and drainage patterns are outlined
- Landscape planting materials are selected
- Exterior hardware, furniture and signage are selected
- Exterior site lighting is selected and positioned
- Irrigation system is outlined
- Construction cost estimates are refined

3. Construction Documents

Upon completion of the Design Development, the final set of Construction Documents are prepared showing all project site components in plan and with complete construction detailing. The project is built from this typical list of drawings:

- Paving Layout Plans
- Site Grading Plans
- Landscape Planting Plans
- Site Signage and Hardware Plans
- Site Lighting Plans
- Irrigation Plans

4. Construction Administration

Following the delivery of a full set of Construction Documents for site work outlined above, the construction of the project begins. EcoPlan is retained to monitor the construction of the site components to assure compliance with the Construction Document drawings. This Construction Administration is done until the project is completed.

HOTELS AND RESORTS

From exclusive boutique resorts to urban business hotels, EcoPlan has participated in the design of many well known properties throughout the world. Featured in publications such as Architectural Digest, Travel + Leisure, Condé Nast Traveler, Tatler's Travel Guide, Gallivanter's Guide, and Forbes Magazine, EcoPlan's efforts have been widely recognized for their ecological approach and their creation of one of a kind places.

AFRICA

Iberostar Marrakech
 Marrakech, Morocco

Singita Pamushana Lodge
 Zimbabwe

ASIA

alphaland Balesin Island Club
 Balesin Island, Philippines

Anya Tagaytay Resort
 Tagaytay, Philippines

**Five-Star Beach Resort
 (name confidential)**
 Hainan Island,
 People's Republic of China

**Five-Star Beach Resort
 (name confidential)**
 Cebu, Philippines

Lubi Plantation Resort
 Davao, Philippines

Simapo Island
 Haikou, People's Republic of China

CARIBBEAN

Caribe Hilton
 San Juan, Puerto Rico

**Fern Tree Spa
 at Half Moon Resort**
 Half Moon Bay, Jamaica

CARIBBEAN (CONTINUED)

Magdalena Grand Beach Resort
 Lowlands, Tobago

Orvis Resort at Sandy Point
 Abaco, Bahamas

Rosewood Hotel Harrison Point
 Barbados, West Indies

**Scrub Island Resort (Expansion),
 Autograph Collection**
 British Virgin Islands

Westin Rôco Ki
 Punta Cana, Dominican Republic

CENTRAL AMERICA

Bristol Hotel
 Panama City, Panama

Four Seasons Resort Hotel
 Guanacaste, Costa Rica

Intercontinental Hotel
 San José, Costa Rica

JW Marriott Resort
 Buenaventura, Panama

Los Sueños Marriott
 Jacó, Costa Rica

Marriott San José
 San José, Costa Rica

Pacífico
 Playa del Coco, Costa Rica

MEDITERRANEAN

Anassa Resort and Spa
 Paphos, Cyprus

Annabelle Hotel
 Paphos, Cyprus

D-Hotel Maris
 Maris, Turkey

**NORTH AMERICA
 The Atlantic Hotel**
 Fort Lauderdale, Florida

The Breakers Resort Hotel
 Palm Beach, Florida

The Cloister Hotel at Sea Island
 Sea Island, Georgia

Grand Key Resort
 Key West, Florida

The Islander
 Islamorada, Florida

Royal Palm South Beach
 Miami Beach, Florida

Palazzo del Lago
 Orlando, Florida

Plunge Beach Resort
 Lauderdale-By-The-Sea, Florida

Renaissance Eden Roc
 Miami Beach, Florida

NORTH AMERICA (CONT.)

Renaissance
 Fort Lauderdale, Florida

Riverside Hotel
 Fort Lauderdale, Florida

St. Petersburg Hilton
 St. Petersburg, Florida

Trump Hotel
 Fort Lauderdale, Florida

SOUTH AMERICA

Hotel Transamérica
 Comandatuba, Brazil

Conrad Cartagena
 Cartagena, Colombia

Costa do Sauípe
 Salvador, Brazil

Lima Casino
 Lima, Peru

Portobello Resort
 Porto Seguro, Brazil

Superclubs Buzios
 Buzios, Brazil

Praia do Forte
 Bahia, Brazil



FOUR SEASONS RESORT AT PENINSULA PAPAGAYO

Location: Guanacaste, Costa Rica

Client: Ecodesarollos Papagayo S.A.

Project size: 40 acres (16 hectares) 145 guest rooms, suites and residences

Scope: Master Planning and Detail Design from Conceptual Development through Construction Documents and Construction Administration for all site elements



Since opening in 2004, The Four Seasons Resort at Peninsula Papagayo has ranked consistently as a top resort by several notable publications such as Travel & Leisure, Gallivanter's Guide and Forbes Magazine. Situated at the end of a remote peninsula, the resort lies in a diverse coastal forest landscape. Tucked between two pristine beaches and coastal forest hillsides, EcoPlan's design utilized materials endemic to the palette of Guanacaste, including native stone walls and vegetation typical of the tropical dry forest.

Select Awards and Honors:

- The 500 World's Best Hotels, Travel + Leisure, 2007-2017
- #1 Resort in Central & South America, Condé Nast Traveler Readers' Choice Awards, 2010
- #1 Best Resort Spa in Mexico & Central America, Condé Nast Traveler, 2010
- World's Best Awards 2008-2011 - Travel+Leisure
- Ranked #53 World's Best Golf Courses outside the US, Golf Digest 2009 & 2010
- #1 Resort in Latin America, Travel + Leisure, 2009
- Costa Rica's Leading Golf Resort, World Travel Awards, 2008, 2009
- Costa Rica's Leading Resort, World Travel Awards, 2006, 2007, 2008
- The World's Very Best Hotels and Resorts, Forbes Traveler 400, 2008
- Architectural Digest Article, April 2004





THE CLOISTER AT SEA ISLAND

Location: Sea Island, Georgia

Client: The Sea Island Company

Project Size: 18 acres (7.3 hectares), 185 rooms

Scope: Overall Site Planning, Hardscape, and Landscape Design

Built in 1928, this classic Addison Mizner hotel had long been a well-known property along the south Georgia coast. Seventy years later, The Sea Island Company rebuilt a new hotel, utilizing many of the original architectural elements of the historic structure. All of the large oak trees planted in 1928 and after were left untouched. Landscape design was completed in partnership with Vassa Cate of the Sea Island Company.



ANASSA RESORT

Location: Polis, Cyprus

Client: Thanos Hotels

Project Size: 13 hectares, 184 rooms and suites

Scope: Overall Site Planning and Construction Documents for landscape, hardscape, pool, and water features

Set within the Akamas National Park, this unique hotel sprawls down the hillside and overlooks the Mediterranean sea. Special consideration was taken to minimize environmental impact and create a design that blended into the native terrain. Villas were placed in small clusters to achieve a village-like atmosphere. In addition, the vegetation matches the rugged hills, while still providing color and shade.





ALPHALAND BALESIN ISLAND CLUB



Location: Balesin Island, Philippines

Client: alphaland Corporation

Project Size: 500 hectares

Scope: Master Planning and Site Design Consultant

With 7.3 km of white sand beaches and 190 hectares of virgin hardwood forest, Balesin Island provided a unique opportunity for a high-end resort and community on a remote island. EcoPlan designed six themed villages inspired by the international vacation spots of Mykonos, Costa Smeralda, St. Tropez, Phuket, Bali, and Balesin itself. Emphasis was placed on maintaining the existing ecological systems on the island while providing luxury facilities and amenities.





CARIBE HILTON

Location: San Juan, Puerto Rico

Client: Hilton International

Project Size: 17 acres

Scope: Conceptual Design through
Construction Documents

This landmark hotel in San Juan, Puerto Rico underwent the first stage of a multi-year renovation aimed at positioning this facility as one of the premier resorts on the island. EcoPlan completed full Contract Documents for phase one including a new multilevel swimming pool, a new spa lap pool and a new entrance feature with associated landscape, lighting and special pavements.





CONRAD HILTON AT KARIBANA

Location: Cartagena, Colombia

Client: Atlantic Point Investments, Inc.

Project Size: 4 hectares

Scope: Master Planning through Landscape
Architectural Site Design

Opened in 2018 this 268 room resort includes four swimming pools, outdoor dining areas, kids club, beach club, spa with outdoor relaxation area and several multi-function event lawns.





COSTA DO SAUIPE



Location: Costa do Sauipe, Salvador, Brasil

Client: Sauipe Investimentos CNO

Project Size: 700 hectares

Scope: Master Planning

Master Planning for this upscale destination resort in Bahia, Brasil included multiple hotels, golf course, tennis center, theme parks, internal transit system, village center, marina, cultural center, and support facilities including employee's village. The site contained a number of sensitive wetland areas and coastal dune formations that were protected and became one of the attractions of the development.





JW MARRIOTT RESORT AT BUENAVENTURA

Location: Buenaventura, Panama

Client: Buenaventura Development Corporation

Project Size: 118 rooms and suites

Scope: Overall Site Planning and Construction Documents for
landscape, hardscape, lighting pool, and water features

After finishing the overall 90 hectare project master plan, EcoPlan provided full Landscape Architectural design services from conceptual design through construction documentation and administration for this 5 star beachfront property.





HAINAN ISLAND RESORT

Location: Hainan Island, China

Client: Confidential

Project Size: 15 hectares

Scope: Overall Site Planning and Landscape
Architectural Detailed Design

EcoPlan was asked to design this five star resort in this popular coastal tourist region. EcoPlan proposed using water and waves as design themes throughout the oceanfront site in China.





ROYAL PALM HOTEL

Location: South Beach, Miami, Florida

Project Size: 2 acres (0.8 hectares)

Scope: Conceptual Design through Construction
 Documents and Construction Observation

EcoPlan provided full landscape architectural design services for this Tribute Portfolio Resort by Marriott on South Beach, Miami. Program elements included various swimming pools, waterfeatures, outdoor terraces, landscape gardens and outdoor dining areas.





ANYA RESORT & RESIDENCES

Location: Tagaytay, Philippines

Client: Roxaco Land Corporation

Project Size: 8 hectares

Scope: Master Planning, Overall Site Planning, Hardscape,
Landscape and Lighting Design

The project site is located 90 minutes south of Metro Manila in the higher elevations of Tagaytay. Upon completion, Anya Resort & Residences will feature a total of 88 resort suites, and 126 luxury, full service branded residences all set within immaculately manicured gardens, atop a gently undulating terrain. Amenities include a full service spa with outdoor treatment rooms and 2 swimming pools. The first phase of the resort opened in the Summer of 2017.





PLUNGE BEACH RESORT

Location: *Lauderdale-By-The-Sea, Florida*

Client: *Florida Development Group*

Project Size: *163 rooms and suites*

Scope: *Overall Site Planning and Construction Documents for landscape, hardscape and lighting*

EcoPlan provided full landscape architectural design services for the renovation of the dated and former Howard Johnson Hotel. The renovation included new outdoor terraces, new swimming pool decking, landscape areas and turtle friendly site lighting.





GUY HARVEY OUTPOST RESORT at PASCO PARK

Location: Pasco County, Florida

Client: Guy Harvey Outpost Resorts

Project Size: 70 acres

Scope: Master Planning

The program for this luxury RV resort located near Tarpon Springs, Florida includes 236 RV camping sites and 106 park model style luxury bungalows. The resort is to be geared towards RV travelers and fishing enthusiasts who will be able to park their trailer boat next to their bungalow or in the on-site storage area. Boat ramp facilities are at Anclote River State Park which is immediately adjacent to the resort.

The amenities at the resort core will include the Outpost Lodge, Discovery Center, a resort style pool, Tiki Bar, freshwater lagoon, beach, sport club, fitness area and a dog park.





PEARL HOME RESORT VILLAS at HUNTERS POINT

Location: Cortez, Florida

Client: Cortez Road Investment and Finance

Project Size: 15 acres

Scope: Master Planning and Landscape
 Architecture

EcoPlan is performing master planning and landscape architectural design services for this luxury, carbon free resort community of production-built villas and hotel suites in the coastal fishing village of Cortez, Florida. Each resort bungalow will feature a solar array and Sonnen batteries that will create a community grid of clean, carbon-free energy.

The project program includes 73 detached Pearl Home Hotel Villas each with rooftop terraces, 48 production built attached hotel suites, an 8000 sf Discovery Center / Resort Core, resort style pool, tiki bar, outdoor gathering areas, kayak launch, boat ramp and marina. Additional amenities include in-water boat storage as well as ample space for boat trailer storage and electric cart storage adjacent to each villa.





SINGITA PAMUSHANA LODGE

Location: Zimbabwe, Africa

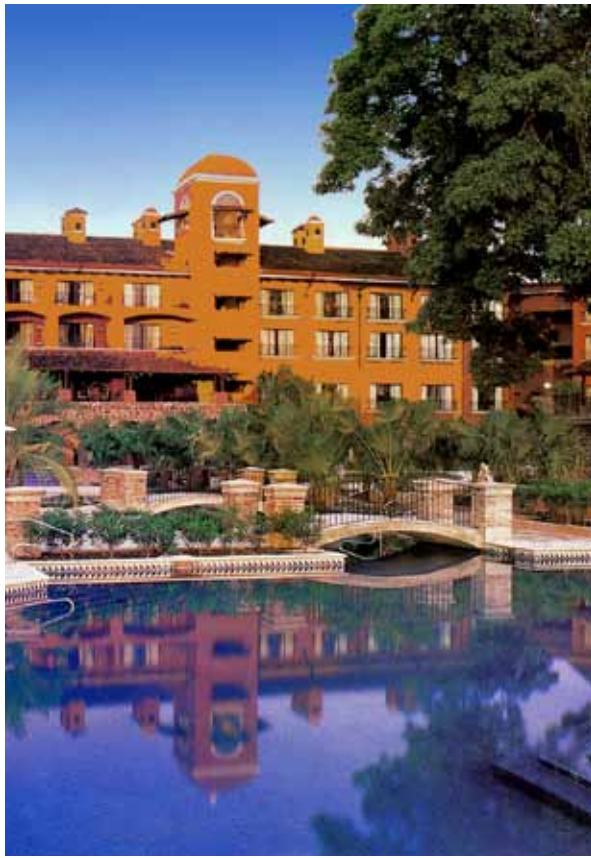
Client: Malilangwe Conservation Trust

Scope: Overall Site Planning and Landscape Architectural
Detailed Design and Construction Administration



The camp consists of six visitor units in the local African vernacular. A staff “village” and administrative components are sited nearby. Situated atop one of the area’s highest points, the site overlooks a lake used by many of the indigenous animal species. All buildings are tucked below the existing tree canopy to minimize visual impact from the outside. In addition, their location on site takes advantage of prevailing breezes while minimizing the amount of solar load.





LOS SUEÑOS MARRIOTT

Location: Jacó, Costa Rica

Client: Marina Herradura S.A.

Project Size: 10 hectares

Scope: Overall Site Planning, Hardscape, and Landscape Design

After the successful completion of the first Marriott in San José, EcoPlan was again asked by the same client to design the new Los Sueños Marriott Resort on the west coast of Costa Rica. Design elements included all sitework, including landscape, hardscape, swimming pools, waterfeatures and lighting.



COMMUNITY PLANNING

EcoPlan has designed and master planned dozens of residential and resort community projects worldwide. Their portfolio of work varies from exclusive private golf communities and secluded island resorts, to suburban military housing communities. In each case, EcoPlan has provided a design that incorporates ecological design principles that integrate the natural and built environment to create truly unique and authentic destinations.

AFRICA

Iberostar Resort
 Marrakech, Morocco

Malilangwe Master Plan
 Zimbabwe

ASIA

Alphaland Mountain Lodges
 Baguio, Philippines

Boracay Gateway Polo Club
 Panay Island, Philippines

Hsinchu Residential
 Hsinchu, Taiwan

Ledong Resort
 Hainan Island,
 People's Republic of China

Mulan Bay
 Hainan Island,
 People's Republic of China

Simapo Island
 Hainan Island,
 People's Republic of China

Tomson Residential
 Shanghai,
 People's Republic of China

Wuyi Residential
 Wuyi, People's Republic of China

CARIBBEAN

Aqua Condominium
 George Town, Grand Cayman

The Balmoral
 New Providence, Bahamas

CARIBBEAN (CONTINUED)

Clifton Cay
 New Providence, Bahamas

Crab Cay
 Exuma, Bahamas

The Jalousie Enclave
 Soufriere, St. Lucia

Lacovia Residential
 George Town, Grand Cayman

Levera Resort
 Grenada, West Indies

Rōco Ki
 Punta Cana, Dominican Republic

CENTRAL AMERICA
Buenaventura
 Farallon, Panama

Campo Real
 San Salvador, El Salvador

Dorada
 Herradura, Costa Rica

Gaviotas
 Golfo de Fonseca, Honduras

Golfo Dulce Preserve
 Golfito, Costa Rica

Hacienda Pinilla
 Guanacaste, Costa Rica

Isla del Ray Resort
 Las Peras, Panama

Luna Azul
 Roatan, Honduras

CENTRAL AMERICA (CONT.)

Merendon Hills
 San Pedro Sula, Honduras

Pacifico
 Playa del Coco, Costa Rica

Peninsula Papagayo
 Guanacaste, Costa Rica

Punta del Norte
 Guanacaste, Costa Rica

Rancho Las Colinas
 Guanacaste, Costa Rica

EUROPE
Rosewood Luttrellstown Castle
 Dublin, Ireland

NORTH AMERICA
Clear Creek
 Johnson, Arkansas

Fort Drum Mountain Community
 Fort Drum, New York

Fort Hood Chaffee
 Fort Hood, Texas

Frederica Township
 St. Simon's Island, Georgia

New River Gorge Preserve
 Fayetteville, West Virginia

Ocean Club North Residences
 Sea Island, Georgia

RiverCamps at Crooked Creek
 West Bay, Florida

SOUTH AMERICA

Araxá Residential
 Araxá, Brazil

Boa Vista Resort & Country Club
 São Paulo, Brazil

Camboinhas
 Rio de Janeiro, Brazil

Costa do Sauipe
 Salvador, Brazil

Guarapari
 Espírito Santo, Brazil

Karibana Residential
 Cartagena, Colombia

Pitanguí Ecological Resort
 Natal, Brazil

Polo Turístico Guamaré
 Rio Grande do Norte, Brazil

Porto Real
 Angra dos Reis, Brazil

Porto Sauipe
 Bahia, Brazil

Praia do Forte
 Bahia, Brazil

Sapiens Master Plan
 Canas Vieras, Brazil

Três Praias
 Guarapari, Brazil



PENINSULA PAPAGAYO

Location: Guanacaste, Costa Rica

Client: Ecodesarollos Papagayo S.A.

Project size: 2,250 acres (910 hectares)

Scope: Master Planning, Site Design Guidelines & Plant Materials Manual, Landscape & Site Design for the project's main entrance and streetscapes

Peninsula Papagayo's magnificent and unique Pacific views set the stage for a dramatic layout and configuration of golf courses, residential developments, and hotels. The first hotel built, The Four Seasons, with the associated Arnold Palmer Design Company golf course, has been called "The most luxurious property on Costa Rica's Pacific coast," by Andrew Harper's Hideaway Report, March 2008.





FOUR SEASONS RESIDENCES & VILLAS AT PENINSULA PAPAGAYO

Location: Guanacaste, Costa Rica

Client: Ecodesarollos Papagayo S.A.

Project Size: 28 Villas and 3 Presidential Residences

Scope: Master Planning and Detail Design from Conceptual Development through Construction Documents and Construction Administration for all Site elements; Including Landscape, Hardscape, Pools and Waterfeatures

Situated at the end of a remote peninsula, the resort lies in a diverse coastal forest landscape. The residences and villas were carefully located on the steep areas of the peninsula.





SEA ISLAND

Location: Sea Island, Georgia

Client: The Sea Island Company

Project Size: 60 acres (24 hectares)

Scope: Master Planning, Site Planning, Hardscape, and Landscape Design



EcoPlan was hired to provide overall master planning for this historical property. The project site included the new Cloister Hotel, Beach Club, Spa and Tennis Center and various multi-family residences.



Select Awards and Honors:

- Forbes Five-Star 2009-2017 and Mobil Five-Star, 2009
- Top 20 Southern US Golf Resorts, Condé Nast Traveler, 2011 (no. 2)
- AAA Five Diamond, 2015-2016
- World's Best Hotels, Travel + Leisure, 2007-2010
- Gold List, Condé Nast Traveler, 2011, 2014
- Reader's Choice Awards, Condé Nast Traveler, 2009
- Top 50 Resorts (US and Canada), Travel + Leisure, 2009 (no. 6)
- Top US Resorts, Andrew Harper's Hideaway Report, 2008 (no. 2), 2012 (No.1)
- Reader's Choice Award, The Cloister Spa, SpaFinder, 2009
- Leading Spa Resort, World Travel Award, 2009





FREDERICA TOWNSHIP

Location: St. Simons Island, Georgia

Client: The Sea Island Company

Project Size: 3,800 acres

Scope: Master Planning, as well as Detailed Site Design for entry, boathouse, and community amenities



Planned as an ultra-exclusive, low-density woodland community, this project offers marsh, lake, woodland, and golf lots on a Tom Fazio designed course. Frederica also includes a new golf clubhouse with adjacent golf “cottages,” a boat house and recreation center, dozens of lakes and boating opportunities, an extensive native bird rookery, and 14 miles of hiking and pedestrian trails.





OCEAN CLUB NORTH RESIDENCES

Location: Sea Island, Georgia

Client: The Sea Island Company

Scope: Conceptual Design through Design Development
and Construction Administration



Situated adjacent to the Sea Island Beach Club, this community consists of four and five bedroom residences overlooking the Atlantic Ocean. Design elements included all sitework, including landscape, hardscape, swimming pools, waterfeatures and lighting.





PALMA REAL AT HACIENDA PINILLA

Location: Tamarindo, Costa Rica

Client: Hacienda Pinilla

Size: 12.5 hectares (30.8 acres)

Scope: Master Planning and Site Design including full
Landscape Architectural Design Documents



With limited ocean frontage to work with the scope included earthwork plans to increase the height of the site in certain areas and a number of view corridors to maximize the number of ocean view units. The configuration of buildings created by EcoPlan creates private entries to each of the units as well as private outdoor garden spaces in the back of the units.





CRESCENT WOODS

Location: Fort Drum, New York, USA

Client: Lend Lease

Project Size: 100 acres

Scope: Master Planning & Detailed Site Design



The project includes a planned residential community for army personnel and also approximately 18 units for senior officer personnel. The residential community was planned in a more “conventional” and creative configuration than the typical base barracks. The configurations and layouts included lots and various residential products as well as associated “neighborhood uses” such as parks, open space, pedestrian connections, etc. The design was also guided by the need to sensitively grade the various parcels to minimize earth movement and the destruction of existing mature vegetation.





PACIFICO RESIDENTIAL

Location: Playa del Coco, Costa Rica

Client: The Jack Parker Corporation

Scope: Overall Site Planning and Landscape Architectural
 Detailed Design and Construction Administration

EcoPlan developed the Master Plan for this gated resort community including single family and condominium housing as well as a retail village and recreational amenities. This approximately 175-acre site rises dramatically to offer spectacular views of the sea from almost every angle. EcoPlan also provided full site design documentation for the project site including landscape planting design, pool design, road layout and hardscape design.





RIVERCAMPS AT CROOKED CREEK

Location: West Bay, Florida

Client: The St. Joe Land Company

Project Size: 1,800 acres

Scope: Master Planning and Detail Site Design for Entrances,
Clubhouse, and Model Homes

The program for the RiverCamps development included 400 home sites, a River House, and various recreational amenities. Although more than 850 acres of the site were wetlands, less than 5 of them were actually impacted by the design and construction. In conjunction with the client, EcoPlan sought to create a community of 'cabins in the woods.' The many groupings of cabins sit against either bay, marsh, river, wetland, or 'grass lakes.' Each enclave is also connected to a system of interpretative trails showcasing the native ecosystems.





KARIBANA



Location: Cartagena, Colombia

Client: Atlantic Point Investments, Inc.

Project Size: 120 hectares

Scope: Master Planning, Overall Site Planning, Hardscape, and Landscape Design

Located on the beach north of Cartagena, Karibana was designed to be a resort-style residential project, catering to local, second home buyers. To achieve that level of luxury, Karibana includes many amenities: a challenging world-class golf course by Nicklaus Design, marina, feature pools, beach club, spa, village shopping center, offices, and hotel. The first phase opened December 2011 and the Conrad Hotel opened in 2018.



GOLF PLANNING AND GOLF LANDSCAPE DESIGN

EcoPlan has worked in conjunction with a number of notable golf course architects, providing master planning, site and landscape planting design services. In our collaboration with the golf course architect and the Owner, EcoPlan aims to establish an overall master plan that meets the client's vision and balances the course layout with other project elements. Similarly, EcoPlan's site and landscape design services strive to balance playability, integration of the natural landscape, and introduction of new landscape to create designs that are both attractive and appropriate for a golf environment.

AFRICA

Iberostar Resort
Marrakech, Morocco
P.B. Dye

ASIA

Balesin International Gateway
Patnanungan Island, Philippines
Golden Age Golf Design

Changshou Hu
Chongqing, People's Republic of China
Ernie Els Design

Ledong Golf Resort
Sanya, People's Republic of China
Tom Watson Design

Mulan Bay
Hainan Island, People's Republic of China
Tom Doak / Renaissance Golf Design

Simapo Island
Haikou, People's Republic of China
Tom Doak / Renaissance Golf Design

Tomson Golf (expansion)
Shanghai, People's Republic of China
Ernie Els Design

Wuyi Golf Resort and Residential
Wuyi, Zhejiang Province
People's Republic of China

Xi'an Yajian International Golf Club
Xi'an, People's Republic of China
Thomson Perrett

ASIA (CONTINUED)

Yixing Park
Yixing, Jiangsu Province
People's Republic of China
Schmidt-Curley Design

CARIBBEAN

Faldo Legacy Course at Rōco Ki
Punta Cana, Dominican Republic
Faldo Design

Fond Bay
St. Lucia, West Indies
Ernie Els Design

Hampstead Estate
Dominica, West Indies
Greg Norman Golf Course Design

Iberostar Resort
Bavaro, Dominican Republic
P.B. Dye

Le Paradis Resort
St. Lucia, West Indies
Greg Norman Golf Course Design

CENTRAL AMERICA

Hacienda Pinilaa
Guanacaste, Costa Rica
Mike Young

Karibana
Cartagena, Colombia
Nicklaus Design

CENTRAL AMERICA (CONTINUED)

Ladera del Mar
Guanacaste, Costa Rica
Hurdzan/Fry

Panama Bay Country Club
Panama City, Panama
Perry Dye and Pete Dye

Four Seasons Golf Club at Peninsula Papagayo
Guanacaste, Costa Rica
Arnold Palmer Signature Design

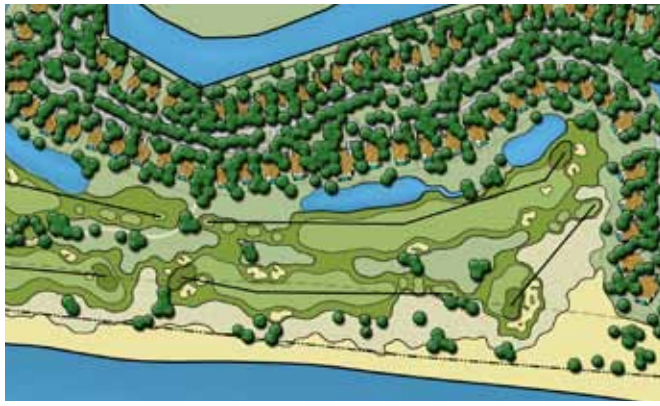
EUROPE

Jezero Golf Resort
Istria, Croatia
Ernie Els Design

Luttrellstown Castle
Dublin, Ireland
Donald Steel

NORTH AMERICA

Frederica Village
St. Simons Island, Georgia
Fazio Design



SANYA CHEUNG KONG



Location: Hainan Island, People's Republic of China

Client: Cheung Kong Gaoyuan Investment

Project Size: 170 hectares

Scope: Master Planning, Government Planning
Submittal, Site Design and Golf Course
Landscape Design

Sitting on a true links site, on a peninsula where the river empties to the ocean, the site presented many opportunities for amenities and views. Working in collaboration with Tom Watson Design, the design includes an 18-hole championship golf course, exclusive residential villas, marina, hotel, condominiums, golf clubhouse, cottages, and retail village.





FALDO LEGACY COURSE AT RŌCO KI

Location: Punta Cana, Dominican Republic

Client: Macao Beach Resort - Dominican Republic

Scope: Master Planning, Landscape Planting Manual
and Landscape Planting Design



After the acquisition of additional land, EcoPlan was involved in the re-routing of a portion of the 18-hole championship golf course that is part of the overall Rōco Ki development. In conjunction with Faldo Design and Troon Golf, EcoPlan also helped prepare the native landscape planting palettes and landscape plans for the course. The design accounted for a variety of site conditions that included coastal headlands, mangrove forests and sawgrass lakes. The course opened for play in December of 2008.





BALESIN INTERNATIONAL GATEWAY GOLF COURSE

Location: Patnanungan Island, Philippines

Client: alphaland Corporation

Project Size: 750 hectares

Scope: Master Planning

EcoPlan teamed up with Golden Age Golf Design to prepare the overall golf routing for this new upscale island destination in the Philippines. The 18-hole championship course was routed through a variety of site conditions including wetlands, grasslands and mature forests. In all 8 holes touch the ocean with nearly all holes viewing the ocean. EcoPlan also designed the overall master plan for this resort and residential development.





SIMAPO ISLAND

Location: Haikou, People's Republic of China

Client: Golf Channel China

Project Size: 150 hectares

Scope: Master Planning and Site Design Consultant



Working with golf course architect Tom Doak EcoPlan prepared the overall master plan, government approval plans, waterfront edge condition details and detailed grading & earthwork plans for this island property. Uniquely situated in the middle of the Nandu River, this project is an island oasis in the middle of the bustling urban environment of Haikou. Built on an island in the Nandu River just three miles before it flows out to sea, the golf course and surrounding development was raised up from the river with dredged sand, but engineered so that it would still allow the river to come up over it in flood stage, have no flooding impact to buildings, and have the golf course return to playability once the waters recede. The project includes an 18-hole championship golf course, golf clubhouse and cottages, a hotel, and a number of exclusive villas situated in private enclaves. Phase one opened in 2014.





FOUR SEASONS GOLF CLUB AT PENINSULA PAPAGAYO

Location: Guanacaste, Costa Rica

Client: Ecodesarollos Papagayo S.A.

Scope: Master Planning & Site Design

The Arnold Palmer signature course was the first course completed at the exclusive resort community of Peninsula Papagayo. Throughout the design process, EcoPlan worked extensively with the development team and golf course architects in the preparation of the master plan, including the routing of the golf course to minimize the impact of roads and residential areas on the golf experience, while maximizing dramatic views from the course. In addition to master planning services, EcoPlan also provided detail site design services for various portions of the course.





IBEROSTAR RESORT

Location: Bavaro, Punta Cana, Dominican Republic

Client: Iberostar Resorts

Project Size: 140 hectares

Scope: Master Planning

Working in concert with Iberostar and golf course architect P.B. Dye, EcoPlan prepared a master plan that provided for an 18 hole world class golf experience and development opportunities adjacent to the golf course.





FREDERICA GOLF CLUB

Location: *St. Simons Island, Georgia*

Client: *The Sea Island Company*

Scope: *Master Planning & Site Design*



Working in concert with the owners, development team, and world renowned golf course architect Tom Fazio, EcoPlan prepared a master plan that provided for a world class, core golf experience. By locating the course in upland areas, the design preserved 100% of the sensitive marsh and forest wetland areas, as well as 450 acres of Wood Stork preserve area. The exclusive community of Frederica Township was recognized as the #1 Golf Course Community by *Travel + Leisure Golf* in 2007.



COMMERCIAL AND URBAN DESIGN

EcoPlan has provided design and planning services for a variety of urban projects, including mixed use, retail, residential, commercial and corporate environments worldwide. Our planning process considers the control of land uses and design of urban environments to guide and ensure orderly development of settlements and communities. Our detail design process allows for the blending of spaces at a human scale to foster positive interaction, unique identity and overall safety.

ASIA

Changshou Hu Village
Chongqing, People's Republic of China

Divilacan Marina Village
Divilacan, Philippines

Wuxi Riverfront
Wuxi, People's Republic of China

CARIBBEAN

Arawak Cay
Nassau Harbor, Bahamas

Carnival Welcome Center
Grand Turk, Turks and Caicos

Eastpoint
Eastpoint, Curacao

Frederiksted Waterfront
Frederiksted, St Croix

N.I.C. Vieuxfort
Vieuxfort, St. Lucia

Plaza San Juan Bautista
San Juan, Puerto Rico

Roco Ki Marina Village
Roco Ki, Dominican Republic

CENTRAL AMERICA

Coyol Free Zone
San José, Costa Rica

Multiplaza Pacific Mall
Panama City, Panama

Pacifico Retail Village
Playa del Coco, Costa Rica

NORTH AMERICA

200 Brickell Ave
Fort Lauderdale, Florida

350 Las Olas Place
Fort Lauderdale, Florida

Boca Center
Boca Raton, Florida

Doral Office Park
Doral, Florida

Harbor Shops
Fort Lauderdale, Florida

Hollywood Boulevard Redevelopment
Hollywood, Florida

Hollywood Circle Mixed-Use
Hollywood, Florida

Lakeshore Plaza I and II
Sunrise, Florida

Lakeside Township
Davie, Florida

Las Olas City Center
Fort Lauderdale, Florida

Library Plaza at Sinclair
Dayton, Ohio

Lynn Financial Center
Boca Raton, Florida

Mary Brickell Village
Miami, Florida

NORTH AMERICA (CONTINUED)

One Plantation Place
Plantation, Florida

Pembroke Pines Mall
Pembroke Pines, Florida

Plantation Pointe
Plantation, Florida

Sinclair Community College
Dayton, Ohio

US Epperson Headquarters
Boca Raton, Florida

WestCreek Commons
Coconut Creek, Florida

SOUTH AMERICA

Ahu Cabral
Curitiba, Brazil

Curitiba Trade Center
Curitiba, Brazil

Praia do Forte Marina Village
Bahia, Brazil

Rio Office Park
Barra da Tijuca, Brazil

Rochevera
São Paulo, Brazil

Sapiens Park
Florianópolis, Brazil

**Vila Nova da Praia at
Costa do Sauipe**
Salvador, Brazil



PLANTATION POINTE

Location: Plantation, Florida

Client: Torburn Partners

Project Size: 80 acres

Scope: Master Planning and Landscape Site Design

EcoPlan continues to be involved in the renovation of the former Motorola Corporate headquarters in Plantation, FL. Efforts have included full services from conceptual plans to permitting and construction administration.





LAS OLAS CITY CENTRE

Location: Fort Lauderdale, Florida

Client: Stiles Development Corporation

Project Size: 3 acres

Scope: Landscape, Hardscape and Urban Design

Located in the heart of the financial district of downtown Fort Lauderdale, this mixed-use high-rise building served as a stepping stone to the downtown streetscape design for Fort Lauderdale. EcoPlan was hired to work on the extensive streetscape design, which included paving and planting design as well as irrigation design. Las Olas City Centre was completed in 2001 and has remained a successful connection with the financial district in downtown.





LIBRARY PLAZA AT SINCLAIR COMMUNITY COLLEGE

Location: Dayton, Ohio

Client: Sinclair Community College

Project Size: 2 acres (0.8 hectares)

Scope: Master Planning and Landscape Site Design

One of the first projects as part of the overall campus wide revitalization was the renovation of the Library Plaza. The new plan included new landscape planting, seat walls, outdoor step seating and plaza paving. Granite pavers from the old plaza steps were removed and reused in the new steps and wall cap design.





RIO OFFICE PARK

Location: Barra da Tijuca, Brazil

Client: Plarcon

Scope: Site Design Including Hardscape, Landscape, Water Features and Landscape Lighting



This office complex located in Barra da Tijuca just outside of Rio de Janeiro includes several office towers, shopping center, hotel and telecommunications center. Phase One included five office buildings. EcoPlan prepared the design for the urban “streetscape” and site work, much of which was over structured parking. Drawings were taken through the Design Development phase and included several water features, hardscape, landscape and lighting.





ROCHAVÉRÁ

Location: São Paulo, Brazil

Project Size: 3.8 hectares

Scope: Conceptual Design
 through Design
 Development

This 37,730 square meter site in São Paulo consists of four office buildings, underground parking and public areas at the ground level. Rochaverá will set the standard of quality for all urban projects in the city by offering an exciting architectural solution combined with a generous public space at the street level. Not only is much needed public park space created, but EcoPlan offers a “green” solution to the otherwise hard streetscape of the city.





VILA NOVA DA PRAIA



Location: Costa do Sauipe, Salvador, Brasil

Client: Costa do Sauipe Resorts

Project Size: 3.5 hectares

Scope: Master Planning and Overall Site Design

Located in the heart of the overall Costa do Sauipe resort development, this mixed use village was designed to be the gathering place for the various hotels surrounding it. With colorful architecture and stone streets it was modeled after the typical Brazilian beach village. The pedestrian village contains various shops, restaurants, plazas, gathering spaces, and several small pousadas (boutique hotels).





THE CIRC HOTEL / HOLLYWOOD CIRCLE

Location: Hollywood, Florida

Client: Gold Coast Florida Regional Center, LLC

Project Size: 25-story Mixed Use

Scope: Overall Site Planning, Hardscape & Landscape Design

Located adjacent to the newly renovated Young Circle Art Park in downtown Hollywood, this mixed-use development contains 397 rental apartments, a 104-room boutique hotel that includes a restaurant and retail space anchored by a major grocery on the northeastern quadrant of the circle.





LYNN FINANCIAL CENTER

Location: Boca Raton, Florida

Client: RLC Architects

Scope: Hardscape, Landscape and Irrigation Design

Certified LEED Gold, Lynn Financial center was designed to improve the quality of life for its occupants as well as minimizing its environmental impact. EcoPlan designed the landscape using native, drought-tolerant species and worked with engineers on the rain collection system for the irrigation.



AMENITIES AND RECREATION

In addition to the planning and design of resorts and communities, EcoPlan has had the pleasure of designing many amenity and recreational facilities for their projects. From world class spas and beach clubs to municipal parks, EcoPlan has the imagination and expertise to design thoughtful and unique facilities that complement each project.

ASIA

The Beach Club at Lubi Plantation
Davao, Philippines

Boracay Gateway Polo Club Equestrian Center
Caticlan, Philippines

Ledong Golf Resort
Sanya, People's Republic of China

Mulan Bay
Hainan Island, People's Republic of China

Simapo Island Golf
Haikou, People's Republic of China

The Spa at Anya Tagaytay Resort
Tagaytay, Philippines

Wuyi Golf Resort
Zhejiang Province
People's Republic of China

Xi'an Yajian International Golf Club
Xi'an, People's Republic of China

Yixing Rare Species Botanic Ecological Park
Jiangsu Province, People's Republic of China

CARIBBEAN

Carnival Welcome Center
Grand Turk, Turks and Caicos Islands

Discovery Center at Rôco Ki
Punta Cana, Dominican Republic

Fern Tree Spa at Half Moon Resort
Montego Bay, Jamaica

Frederiksted Waterfront
Frederiksted, St Croix

CENTRAL AMERICA

Acuífero Sanctuary
San Pedro Sula, Honduras

Adrenalina Town
Jacó, Costa Rica

Four Seasons Golf Club at Peninsula Papagayo
Guanacaste, Costa Rica

Ladera del Mar
Guanacaste, Costa Rica

Pacifico Beach Club
Playa del Coco, Costa Rica

Panama Bay Country Club
Panama City, Panama

NORTH AMERICA
Aberdeen Tennis and Aquatics Center
Boynton Beach, Florida

Adventures on the Gorge
Fayetteville, West Virginia

Boca West Club
Boca Raton, Florida

The Cloister Beach Club
Sea Island, Georgia

The Cloister Spa and Tennis Club
Sea Island, Georgia

Frederica Township Golf Club
St. Simons Island, Georgia

NORTH AMERICA (CONTINUED)

Frederica Township Recreation Club and Boathouse
St. Simons Island, Georgia

Guy Harvey Outpost Resort
Tarpon Springs, Florida

The Lodge at Sea Island
St. Simons Island, Georgia

Neptune Park
St. Simons Island, Georgia

Sea Island Equestrian Club
St. Simons Island, Georgia

The Spa and Fitness Center at The Breakers Resort
Palm Beach, Florida

River House - RiverCamps at Crooked Creek
West Bay, Florida

SOUTH AMERICA
Karibana Beach Club
Cartagena, Colombia

Karibana Golf Club
Cartagena, Colombia

Parque Sauipe
Salvador, Brazil

Praia do Forte Aviary
Bahia, Brazil

Praia do Forte Spa
Bahia, Brazil



ADVENTURES ON THE GORGE

Location: Fayetteville, West Virginia

Client: Adventures on the Gorge

Scope: Master Planning and Landscape Architecture



EcoPlan has been working with the ownership and operations team at AOTG since 2008 in the planning and site design of both the Canyon Rim and Mill Creek campuses. Planning efforts have included new cabin enclaves, site layout of new roads and trails, location of buildings, layout of zip lines, aerial adventure courses, campus expansion, playgrounds, swimming pools and other amenity zones. Detail design efforts have included a new feature swimming pool complex, new luxury cabins and a conference center. Current efforts are looking to improve circulation throughout the original Canyon Rim Campus and integrate a 9-acre luxury tree house enclave into the overall adventure resort.





DISCOVERY CENTER AT RŌCO KI

Location: *Punta Cana, Dominican Republic*

Client: *Macao Beach Resort - Dominican Republic*

Scope: *Overall Site Planning and Landscape
Architectural Construction Documents*

The beautiful and indigenous architecture of the Discovery Center is anchored by various water features, a multi-level pool, gardens, outdoor terraces, and the main arrival court. A putting green links the site to the neighboring Nick Faldo signature golf course. Opened in 2006, the Discovery Center serves both as a sales center and beach club for the overall development of Rōco Ki.





THE BREAKERS BEACH CLUB AND SPA

Location: Palm Beach, Florida

Client: The Breakers Palm Beach

Project Size: 3.5 acres

Scope: Conceptual Design through Construction
 Documents and Construction Observation

EcoPlan provided full landscape architectural design services for the first phase of the beach club and spa project at this prestigious landmark in Palm Beach, Florida. Program elements included a spa, fitness center, ballroom, restaurant, bungalows, various swimming pools, waterfeatures, outdoor terraces, promenade and an event lawn.





THE BEACH CLUB AT LUBI PLANTATION

Location: Kopia Island, Davao, Philippines

Client: Torre Lorenzo Development Corporation

Scope: Overall Master Planning and Site Design
through Schematic Design

As part of the master planning effort for this 36 hectare former coconut plantation, EcoPlan prepared the site design documents through schematic design for the beach club. Managed by Dusit International the beach club includes two swimming pools, restaurant, reception area and watersports center.





BOCA WEST COUNTRY CLUB

Location: Boca Raton, Florida

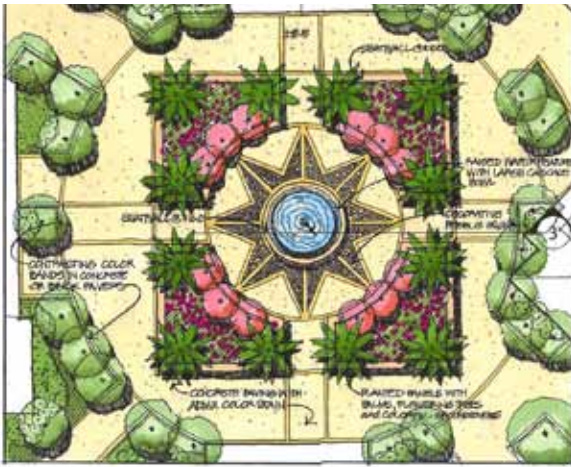
Client: Boca West Country Club

Project Size: 3 acres

Scope: Conceptual Design through Construction Documents
and Construction Observation

EcoPlan provided full landscape architectural design for the new 153,000 square foot golf and activities clubhouse for Boca West Country Club. Scope of work included landscape design, site lighting, fountain design and irrigation.





CARNIVAL GRAND TURK

Location: Grand Turk, Turks and Caicos Islands

Client: Carnival Cruise Lines

Scope: Concept Development through Schematic Design Documents

EcoPlan provided Landscape Architectural design services in conjunction with OBMI Architects, from conceptual development through Schematic Design for this cruise terminal and welcome center located on the capital island of Grand Turk, Turks and Caicos. The first phase has been completed and has been receiving passengers since 2006.





ABERDEEN FITNESS & AQUATICS CENTER

Location: Boynton Beach, Florida

Client: Aberdeen Golf and Country Club

Scope: Conceptual Design through Design Development
and Construction Administration for hardscape,
landscape, and water features

Working together with the ownership and the development team, EcoPlan's scope in this community clubhouse upgrade included a resort-style pool with water features, interactive fountain, terraces, croquet lawn, and tennis center.





PACIFICO BEACH CLUB

Location: Playa del Coco, Costa Rica

Client: The Jack Parker Corporation

Project Size: 0.5 hectares

Scope: Overall Site Planning and Landscape Architectural
Detailed Design and Construction Administration



Located adjacent to the main Pacifico Residential property, the beach club provides beach access to both owners and guests of Pacifico. The elegant 'member's club' setting not only provides beach club amenities, but also serves as a sales center. EcoPlan's role in the design and implementation process included the landscape and hardscape design of the infinity edge swimming pools, decks, entrance courtyard, gardens, and beach side lawn areas.





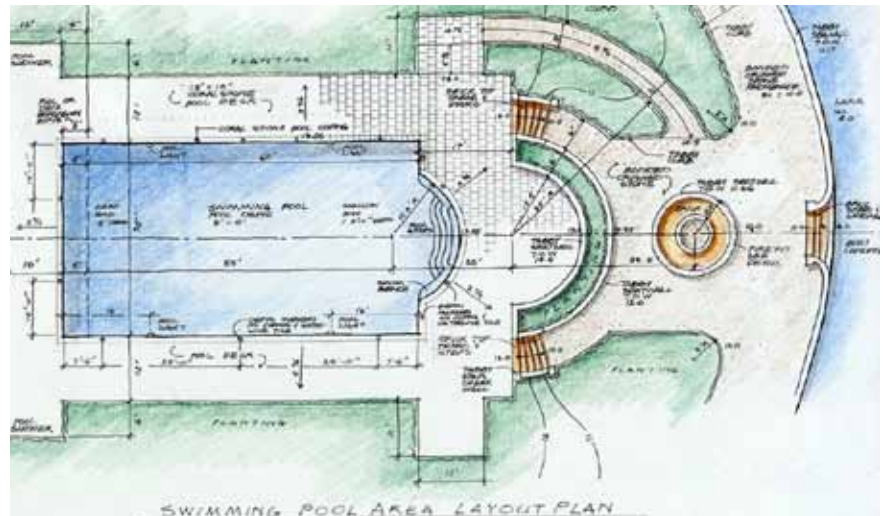
THE BOATHOUSE AT FREDERICA TOWNSHIP

Location: St. Simons Island, Georgia

Client: The Sea Island Company

Scope: Master Planning & Site Design

EcoPlan prepared the master plan and site design documents for this recreational amenity within the overall Frederica Township community. Project components included the boathouse, recreation club, swimming pool, tennis courts, walking paths, event lawn, fire pit and covered dining areas.





THE CLOISTER SPA AND TENNIS CLUB

Location: Sea Island, Georgia

Client: The Sea Island Company

Project Size: 5 acres

Scope: Conceptual Design through Design Development
and Construction Administration for hardscape,
landscape, and water features

Done in conjunction with the renovation of the Cloister Hotel, the Spa and Tennis Club at Sea Island is an award winning amenity for the resort. EcoPlan was responsible for the overall planning of the spa area as well as the detailed site design of the tennis courts, entrance courtyard, walkways, landscape and waterfeatures.





THE CLOISTER BEACH CLUB

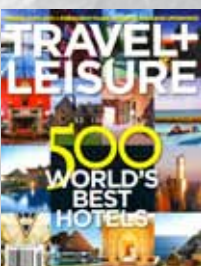
Location: Sea Island, Georgia

Client: The Sea Island Company

Scope: Conceptual Design through Design Development and Construction
 Administration for hardscape, landscape, and water features

In conjunction with the renovation of the Cloister Hotel and Spa at Sea Island, the Cloister Beach Club was the third component of the overall Resort Complex to be remodeled. The new club sits directly on the Atlantic Ocean, and in addition to the white sand beach, provides 20,000 square feet of 'feature' swimming pools including lap, family, children's, and 'quiet' areas.





NOTABLE AWARDS AND PUBLICATIONS

The Cloister at Sea Island:

- Forbes Five-Star 2010, 2011 and Mobil Five-Star, 2009
- Top 20 Southern US Golf Resorts, Condé Nast Traveler, 2011 (no. 2)
- World's Best Hotels, Travel + Leisure, 2007-2010
- Gold List, Condé Nast Traveler, 2011
- Reader's Choice Awards, Condé Nast Traveler, 2009
- Top 50 Resorts (US and Canada), Travel + Leisure, 2009 (no. 6)
- Top US Resorts, Andrew Harper's Hideaway Report, 2008 (no. 2)
- The Cloister Spa, Mobil Five-Star, 2009, Forbes Five-Star 2010, 2011
- Reader's Choice Award, The Cloister Spa, SpaFinder, 2009
- Leading Spa Resort, World Travel Award, 2009

Anassa:

- Top 100 List, Condé Nast Traveler, 2009
- 101 Best Hotels, Tatler Travel Guide, 2009
- Readers Choice Travel Awards, Condé Nast Traveler, 2009
- Member of Leading Hotels of the World
- Readers Choice Travel Awards, Condé Nast Traveler, 2008
- Gold List, Best for Facilities, Condé Nast Traveler, 2008
- Readers Choice Travel Awards, Condé Nast Traveler, 2007
- "Hot List", Condé Nast Traveler, 1999
- Award of Honor, ASLA, 2003

The Faldo Legacy Course at Roco Ki:

- Top 10 New Courses, Travel + Leisure Golf, 2008
- #2 Course in the World, Association of British Travel Agents (second only to St. Andrews of Scotland), 2008
- Top Courses in the Caribbean and Mexico, Golfweek, 2009
- Best New International Courses, Links Magazine, 2008

Pamushana:

- "The Hot List - 21 of the World's Coolest Hotels", Conde Nast Traveller, April 1999
- Tourism for Tomorrow Awards 2011, Conservation Category 2011
- 101 Best Hotels in the World, Tatler Travel Guide, 2011 (UK)
- Leading Safari Lodge (Zimbabwe) World Travel Awards, 2009, 2010, 2011 (USA)

Four Seasons Papagayo:

- The 500 World's Best Hotels, Travel + Leisure, 2007-2012
- #1 Resort in Central & South America, Condé Nast Traveler
- Readers' Choice Awards, 2010
- #1 Best Resort Spa in Mexico & Central America, Condé Nast Traveler, 2010
- World's Best Awards 2008-2011 - Travel+Leisure
- Ranked #53 World's Best Golf Courses outside the United States, Golf Digest, 2009, 2010
- #1 Resort in Latin America, Travel + Leisure, 2009
- Costa Rica's Leading Golf Resort, World Travel Awards, 2008, 2009
- Costa Rica's Leading Resort, World Travel Awards, 2006, 2007, 2008
- The World's Very Best Hotels and Resorts, Forbes Traveler 400, 2008
- Architectural Digest Article, April 2004

Hacienda Pinilla:

- Condé Nast Johansens Recommended
- Sustainable Tourism Certified, Costa Rica Tourism Institute
- Certified Audubon Cooperative Sanctuary

Caribe Hilton:

- Great Hotels of the World, 2002
- Puerto Rico's Leading Resort, World Travel Awards, 2006, 2010
- Puerto Rico's Leading Spa Resort, World Travel Awards, 2008

Rivercamps at Crooked Creek:

- Published "Idea House", Southern Living, 2004
- 1st Place Main Entry Landscape, FNPS, 2008

Los Sueños Marriott:

- Great Hotels of the World, 2000
- Mexico & Central America's Leading Golf Resort, World Travel Awards, 2008, 2009, 2010, 2011

Lakeshore Plaza:

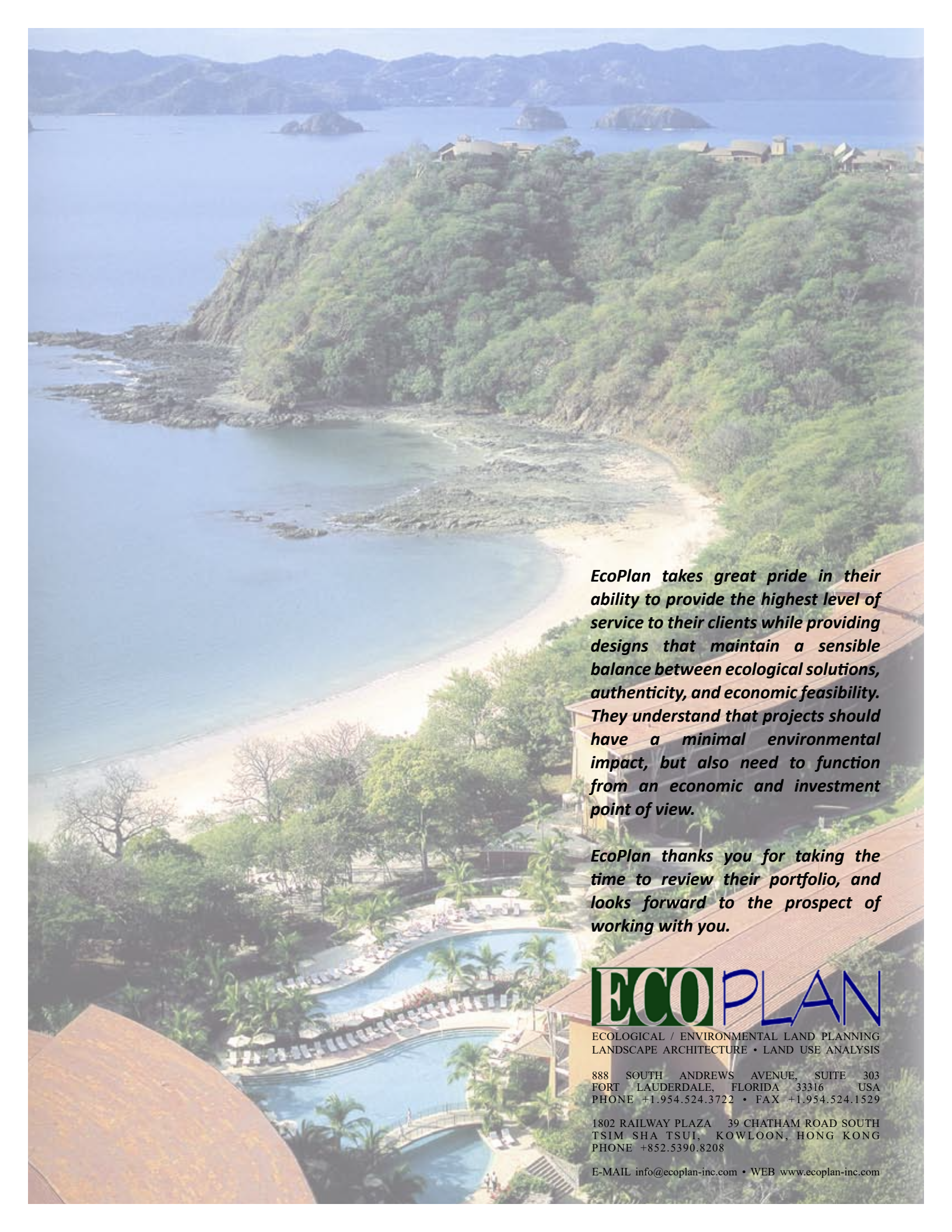
- Award for Excellence, ABC South Florida, 2011
- LEED Silver Certification

Curitiba Trade Center (with VOA Associates Architects):

- Chapter Design Award, American Institute of Architects, 1998

Intercontinental Hotel, San Jose:

- Mexico & Central America's Leading Business Hotel, World Travel Awards, 2011, 2010, 2008 - 2004



EcoPlan takes great pride in their ability to provide the highest level of service to their clients while providing designs that maintain a sensible balance between ecological solutions, authenticity, and economic feasibility. They understand that projects should have a minimal environmental impact, but also need to function from an economic and investment point of view.

EcoPlan thanks you for taking the time to review their portfolio, and looks forward to the prospect of working with you.

ECOPLAN

ECOLOGICAL / ENVIRONMENTAL LAND PLANNING
LANDSCAPE ARCHITECTURE • LAND USE ANALYSIS

888 SOUTH ANDREWS AVENUE, SUITE 303
FORT LAUDERDALE, FLORIDA 33316 USA
PHONE +1.954.524.3722 • FAX +1.954.524.1529

1802 RAILWAY PLAZA 39 CHATHAM ROAD SOUTH
TSIM SHA TSUI, KOWLOON, HONG KONG
PHONE +852.5390.8208

E-MAIL info@ecoplan-inc.com • WEB www.ecoplan-inc.com